



BEAVER NATION NEWS

Printed by
The St. Edward Beaver
Crew

Mr. Osborn	1
Loup Photo Contest	2
Recognition	3
Fitness Center	4
It Adds Up....	5
Music NEWS	6-9
BB Calendars	10-11
Coloring	12-13
Mental Health	14-15
Senior Spotlight	16-17
FFA NEWS	18
Jan Calendar	19

St. Edward Stories

St. Edward Public Schools

JANUARY 2024

From the Superintendent's Desk

Happy New Year, and I hope your 2024 is off to an amazing start! The first semester is in the books, and we are underway with part two of the 2023-2024 school year. I hope your Holidays were a success and you found quality and quantity time to relax and enjoy friends and family. Our staff will be busy on January 3rd with some professional development activities as well as preparing for the return of the students from the long break.

Mother Nature has been good to us so far, and we have not had to adjust any school days due to inclement weather. However, when we experience inclement weather severe enough to cause a late start or a school closure, we will make the announcement, first and foremost, through the district's JMC Messenger Notification System. We will also utilize local news media. Inclement weather information is currently broadcast regularly by the following radio and television stations. 1. Radio: KLIR – FM 101.1; AM 900; FM 110.3; FM 93.5; AM 1510 (Columbus) 2. Television: KOLN –KGIN, channel 10 (Lincoln). Stay tuned to these information sources for winter weather information.

Our winter NSAA activities are well underway as well with competition in full swing. The boys' and girls' basketball teams have played several games. I would like to take this opportunity to share some thoughts on sportsmanship. Good sportsmanship by all involved in our activities and positive support of the coaches, players, and officials is an expectation. I would like to share with you the following statement which is announced at each home contest hosted by St. Edward Public Schools as well as every other school in the state. *"St. Edward High School and the Nebraska School Activities Association promote good sportsmanship by students, athletes, coaches, and spectators. We request your cooperation by supporting the participants and officials in a positive manner. Profanity, ethnic, sexist, or other intimidating comments or actions directed at officials, students, athletes, coaches, or team representatives will not be tolerated and are grounds for removal from the facility."* Thank you in advance for cooperating and doing your part as a spectator in maintaining a positive and respectful environment for everyone to enjoy activities our students are involved in.

Thank you for your time, and make January a great month and a wonderful start to 2024!

LOWER LOUP NRD'S 2024



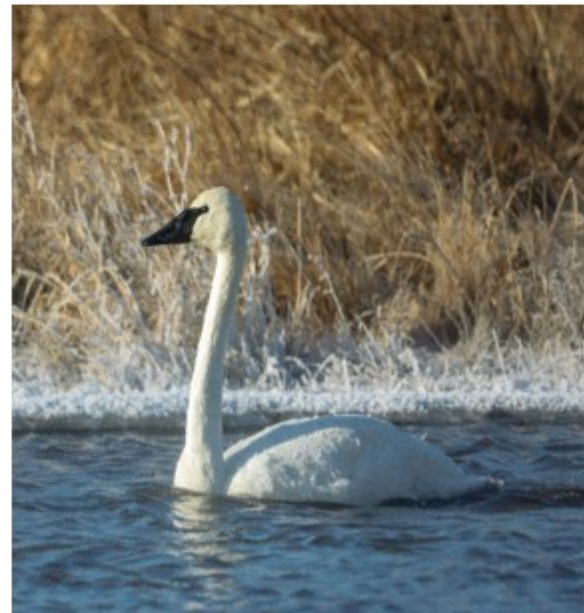
PHOTO CONTEST



SHOW US YOUR BEST SHOTS!

Do you have a knack for capturing incredible images? If so, the directors and staff of the Lower Loup Natural Resources District encourage you to enter your best shots in the 2024 Lower Loup NRD Photo Contest.

Send high-res camera or phone photos to abartels@llnrd.org by midnight May 15, 2024. Photographers retain ownership of their images. By submitting, entrants grant the Lower Loup NRD potential use of their images in social media, website content, other digital use, and in printed materials. Winners will be announced in June 2024. Photos can include nature, wildlife, agriculture, recreation, people, conservation activities, and more. **Images taken at the LLNRD's Pibel Lake and Davis Creek recreation areas, and the LLNRD Arboretum in Ord, are of special interest.** Enter today, and learn more at www.LLNRD.org.



PRIZES WILL BE AWARDED FOR
1ST, 2ND, AND 3RD PLACES.



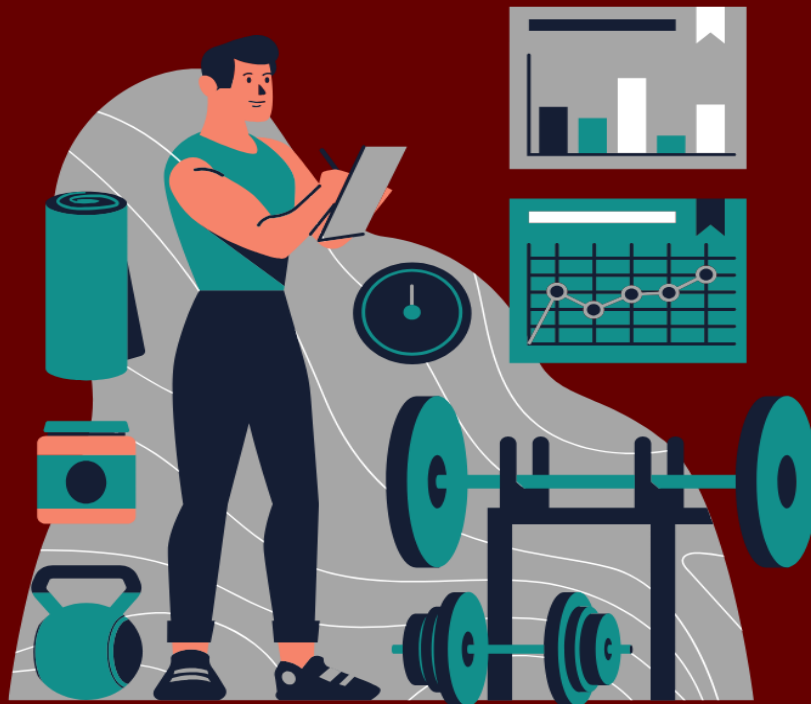
SAFE SHOOTING & GOOD LUCK!

ST. EDWARD GYM MEMBERSHIP

PLEASE PAY YOUR 2024 \$100 GYM MEMBERSHIP BY JANUARY 22, 2024! FAILURE TO RENEW YOUR MEMBERSHIP WILL RESULT IN A DEACTIVATED KEY FOB! ONCE YOUR KEY IS DEACTIVATED, A CHARGE OF \$10 WILL BE MADE TO RECEIVE A NEW KEY FOB. IF YOU ARE NO LONGER USING YOUR KEY FOB, PLEASE TURN IT INTO THE OFFICE! THANK YOU!

****PAYMENT MAY BE BROUGHT TO THE
OFFICE DURING SCHOOL HOURS****

****LOSS OF MEMBERSHIP MAY OCCUR IF STUDENTS OR CHILDREN UNDER THE AGE OF 18 IS CAUGHT USING THE FACILITIES!!!****



PLEASE REMEMBER YOU ***MUST*** BE 18 YEARS OLD TO BE UNATTENDED IN THE FITNESS CENTER OR GYM !!! NO HIGH SCHOOL STUDENT IS ALLOWED TO BE IN THE FITNESS CENTER/GYM UNATTENDED. IF YOU ARE IN HIGH SCHOOL AND 18, YOU ARE STILL REQUIRED TO BE UNDER PARENTAL SUPERVISION.



ATTENDANCE MATTERS



MISSING A DAY HERE AD THERE MAY NOT SEEM LIKE MUCH,
BUT ABSENCES ADD UP!!

When a student
misses



= 1.25
Hours

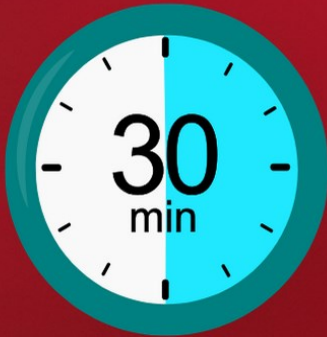


ONE DAY

ONE WEEK

ONE MONTH

ONE YEAR



= 2.5
Hours



ONE DAY

ONE WEEK

ONE MONTH

ONE YEAR

EVERY

EVERY

EVERY



Jardy
Early Leave
Absence



Every Minute counts toward reading on grade level

It adds up!

Sweet Treats

An All-Star Collection of Gourmet Chocolates



Pecan Caramel Clusters

-5102 - 5 oz. box \$12

-2102 - Double box - \$18

Roasted pecans are covered in caramel then covered with creamy milk chocolate.

Cashew Caramel Clusters

-5174 - 5 oz. box - \$12

-2174 - Double box - \$18

Roasted cashews are covered in caramel then covered with creamy milk chocolate.

Dark Chocolate Caramels with Sea Salt

-5125 - 6 oz. box \$12

-5225 - Double box - \$18

A flavor sensation with chewy caramel surrounded by rich, dark chocolate and sprinkled lightly with sea salt.

Peanut Butter Bears

-5350 - 6 oz. box - \$12

-2350 - Double box - \$18

Adorable milk chocolate bears are bursting with smooth peanut butter cream.

Cookies & Cream Cups

-5119 6 oz. box - \$12

A harmonious blend of crunchy, chocolate cookie crumbles and sweet white confection.

Mint Penguins

-5108 - 6 oz. box - \$12

Sculpted dark chocolate Penguins with white bellies are bursting with frosty mint.

Caramel Apples

-5220 - 7 oz. box - \$12

Sculpted milk chocolate apples give way to a soft, apple flavored caramel center.

English Butter Toffee

-5117 - 6 oz. box - \$12

Handcrafted crunchy toffee is mixed with almond pieces and covered in creamy milk chocolate.

family Favorites



0007 - \$12

Hot Cajun Crunch

Combinación cajuna. Picante y caliente de Crojido
Hot cajun corn sticks, cajun peanuts, pretzels and sesame sticks. 7 oz. (Pull Top Can). Made in USA.



0004 - \$12

Honey Roasted Peanuts

Cubrió cacahuates en la miel
Honey and sugar sweeten these freshly roasted peanuts. 9 oz. PTC (Pull Top Can). Made in USA.

0008 - \$14

Honey BBQ Mix

Variedad de BBQ con Miel
A savory BBQ mix with BBQ peanuts and corn sticks; pepitas; and honey roasted peanuts, cashews, almonds and sesame sticks. 8 oz. (Pull Top Can). Made in USA.



0009 - \$14

Peanut Butter Pretzel Ball Mix

A mix for the peanut butter lover with milk chocolate peanut butter cups, candy coated peanut butter candies, peanuts and pretzel balls. • 8 oz. (Pull Top Can). Made in USA.

0005 - \$12

Cranberry Nut Mix

Los arándanos mezclaron con varias nueces
Cranberries, raisins, peanuts, cashew halves, banana chips, almonds and walnuts. 7 oz. (Pull Top Can). Made in USA.

THE MATTRESS FUNDRAISER



**EVERY PURCHASE
BENEFITS THE
ST. EDWARD
MUSIC DEPT.**

**SAT. MAY 18, 2024
10AM - 4PM
@ ST. EDWARD
COMMUNITY CENTER**

- ✓ All sizes available, including custom
- ✓ 25+ mattresses on display, all comfort levels
- ✓ Brand New with 1 to 20 year warranties
- ✓ Delivery and Shipping Available
- ✓ Cash, Check, Credit Card Accepted
- ✓ **Financing Available**

FOR EARLY INQUIRIES ON FINANCING, PLEASE CALL/EMAIL CFS OMAHA

712-249-5551 OR CFSOMAHA@CFSBEDS.COM



Adjustable
Bases



Sheet
Sets



CordaRoy's
Bean Bags



Massage
Products



Mattress
Protectors



Luxury
Pillows

Scan For:



Facebook Event
Details!

FREE THRESHOLD DELIVERY WITH PURCHASE OF ANY MATTRESS
(SET UP DELIVERY AVAILABLE AT ADDITIONAL COST)

Scan For:



Digital Flyer to
Save and Share!

You've been personally referred by: _____

Congratulations to...

Kalvin Sindelar - Alto Sax Underclassmen
Honor Wind Ensemble

Arlette Ireno-Gallardo- Clarinet
Underclassmen Honor Symphonic Band

January 15, 2024
At
Kearney High School
Concert Hall & Theater
Concert Time TBA



Congratulations!!!

2025

Chicago

Music Trip Fundraiser

January 9-22, 2024

Sweets & Nuts

Jerel Matchett
UNK Honor Choir
Tenor

Lydia Ketelsen
UNK Festival Choir
Soprano

Alli Brauner
UNK Treble Choir
Alto II

Monday, January 29th
Concert TBA



Boone Central Choral Clinic
Monday, January 8th
Choir leaves at 9:30 a.m.
Concert at 5:30 p.m.
(Students bring dress clothes for Concert)

Carter Anson, Alli Brauner, Madison Camp,
Lydia Ketelsen, KayLyn Cruise,
Jerel Matchett, Anthony Reader,
Jacob Reeves & Kendra Werner



Congratulations!!!

Kalvin
and
Arlette

Underclassmen Honor Bands

Kalvin - Wind Ensemble
Alto Sax

Arlette - Symphonic Band
Clarinet

Kearney High School
JANUARY 15, 2024



Congratulations!!!



Kalvin

Wayne State College

Honor Bands

Symphonic Band

Alto Sax





St. Edward Boys Basketball

All times are subject to change

January 2024

Sunday	Monday	Tuesday	Wednesday	Thursday	Friday	Saturday
	School Gym 1 No Practice New Year's Day	School Gym 2 Practice 10:00 AM-Noon	School Gym 3 Practice TBD	Community Building 4 Practice 3:45-6:00 PM	vs Santee 5 Varsity 7:00 Be @ School by 4:30	@ High Plains 6 Varsity @ 7:45 Bus leaves @ 4:15
7	School Gym 8 Practice 3:45-6:00 PM	School Gym 9 Practice 3:45-6:00 PM	School Gym 10 Practice 3:45-6:00 PM	@ Heartland Luth 11 Varsity 7:45 Bus leaves @ 3:45 PM	School Gym 12 Practice 3:45-6:00 PM	GRC Tournament 13 Opponent TBD Time TBD
14	Community Building 15 Practice 3:45-6:00 PM	GRC Tournament 16 Or Practice in Com. building 3:45-6:00 PM	Community Building 17 Practice 3:45-6:00 PM	Community Building 18 Practice 3:45-6:00 PM	GRC Tournament 19 Or Practice in Com. building 3:45-6:00 PM	GRC Finals 20 TBD
21	School Gym 22 Practice 3:45-6:00 PM	@ Humphrey SF 23 Varsity @ 7:45 Bus Leaves @ 4:00	School Gym 24 Practice 3:45-6:00 PM	School Gym 25 Practice 3:45-6:00 PM	School Gym 26 Practice 3:45-6:00 PM	27
28	Community Building 29 Practice 3:45-6:00 PM	vs Riverside 30 Varsity @ 7:45 Be @ school by 4:45	Community Building 31 Practice 3:45-6:00 PM			

DATES

TO REMEMBER

January 2nd & 3rd

NO SCHOOL – Practice times set for 10 AM to Noon right now, can change if necessary.

January 13, 16, 19, 20

GRC Tournament dates. Note if we do not play games on those dates we will have a regularly scheduled practice instead.

January 2024

Sunday	Monday	Tuesday	Wednesday	Thursday	Friday	Saturday
DECEMBER 31	1 NO PRACTICE NEW YEARS DAY	2 School Gym Practice 8:00-10:00am MEYER GONE	3 School Gym Practice TBD	4 School Gym Practice 3:45-6:00pm	5 vs Santee Varsity 5:30 Report to school 4:00	6 @ High Plains Varsity 6:00 Bus Leave @ 4:15
MEYER GONE	8 Community Bldg. Practice 3:45-6:00pm	9 Community Bldg. Practice 3:45-6:00pm	10 Community Bldg. Practice 3:45-5:30pm	11 @ Hrt. Lutheran Varsity 6:00 Bus Leave @ 3:45	12 Community Bldg. Practice 3:45-6:00pm	13 GRC Tourn. Opp. TBD Time TBD
14	15 GRC Tourn. or Practice in School Gym TBD	16 School Gym Practice 3:45-6:00pm	17 School Gym Practice 3:45-5:30pm	18 GRC Tourn. or Practice in School Gym TBD	19 School Gym Practice 3:45-6:00pm	20 GRC Tourn. Finals TBD
21	22 Community Bldg. Practice 3:45-6:00pm	23 @ St. Francis Varsity 6:00 Bus Leave @ 4:00	24 Community Bldg. Practice 3:45-5:30pm	25 @ CWC Varsity 6:00 Bus Leave @ 4:00	26 Community Bldg. Practice 3:45-6:00pm	27
28	29 School Gym Practice 3:45-6:00pm	30 vs. Riverside Varsity 6:00 Report to school 4:30	31 School Gym Practice 3:45-5:30pm			

Dates to Remember

January 2nd & 3rd	January 13, 15, 19, 20
NO SCHOOL - Practice time set for 8:00-10:00AM on 2nd. TBD on 3rd. Can change if needed.	GRC Tournament Dates. Note that if we do not play games, we will have regularly scheduled practice instead.

Name _____

CHRISTMAS COLOR BY NUMBER

Directions: Color the picture according to the code.

1 – Red

3 – Brown

5 – Blue

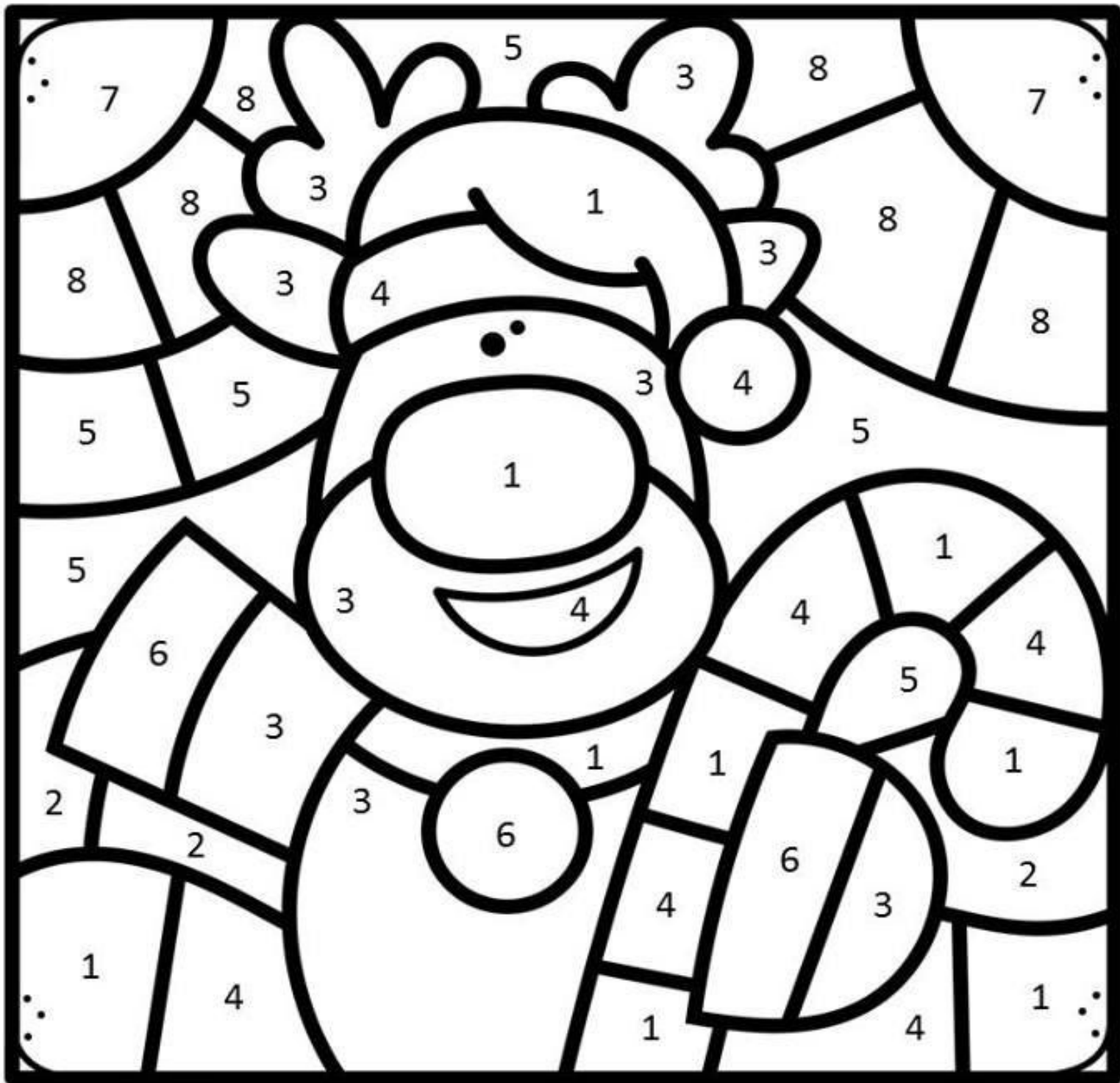
7 – Yellow

2 – Green

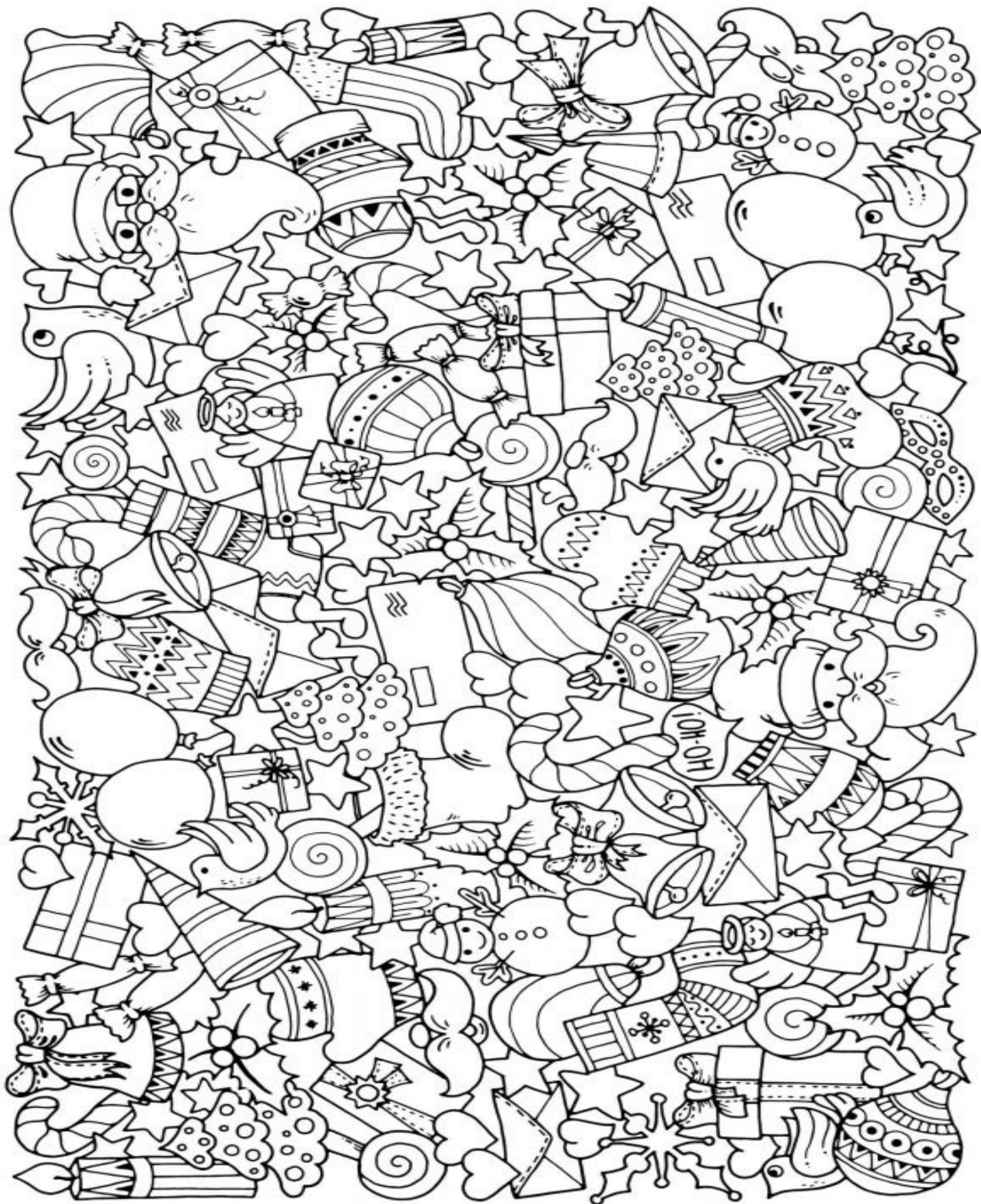
4 – White

6 – Black

8 – Pink



¹³ Complete either picture, color by number or search and color, and turn it in the office to receive a prize!



SEASONAL AFFECTIVE DISORDER

SEASONAL AFFECTIVE DISORDER (SAD) IS A FORM OF DEPRESSION IN WHICH PEOPLE EXPERIENCE DEPRESSIVE EPISODES DURING SPECIFIC TIMES OF THE YEAR, TYPICALLY BEGINNING IN LATE FALL OR EARLY WINTER

SAD IS ESTIMATED TO AFFECT 10 MILLION AMERICANS. ANOTHER 10 TO 20% MAY HAVE MILD SAD



SAD IS 4X MORE COMMON IN WOMEN THAN MEN.

THE AGE OF ONSET OF SAD IS TYPICALLY BETWEEN 18 TO 30

Graphic by Morgan Mcpeek/ Source: psychologytoday.com

connection prevents suicide



mental health matters

What are 988, 911, & 211?

988 Suicide and mental health crisis care
New number for National Suicide Prevention Lifeline

911 Dispatching emergency medical services, fire and police

211 Suicide & mental health crisis care with emphasis on local community resources and care coordination

211 Big Bend is a 988 Suicide & Crisis Lifeline Center.

2.1.1

Big Bend

SIX TIPS TO COMBAT THE "WINTER BLUES"



Stay active!



Eat healthy!



Stay social



Use lights to mimic sunshine



Have fun!



Open up about your feelings



Stay Connected



Stay Active



Reach Out
for Help



Embrace Winter



Focus on gratitude



Collaborate with
Kids on Plans

Ready to take on **WINTER**

Expert Advice for
Child & Youth
Mental Health



Keep Healthy
Habits and Routines



Choose pet-safe products to
melt snow and ice.

Clean your pet's feet and belly after walks
to remove salt and chemicals.



Consider applying a specialized balm or
ointment to your pet's paw pads to help protect
them from the cold and ice.



Shorten the amount of time your pet
spends outside.



Check your vehicle. Critters, especially cats,
will try to hide in wheel wells or any confined
space to get away from the cold.



Stock up on new toys and indoor activities to
keep your pet active while staying inside.

**STAY
INSIDE**

Bring your pets inside and make sure
they have a warm place to sleep.

REMEMBER: If it's too cold for you, it's too cold for them.



A nickname?
Brendad friends only

What is a memory of a favorite birthday?
Bowling with my cousin and friend

4. Who are your parents and siblings?
Cody/Mark/Shaina. Caden, Zaiden, Raylyn, Avalyn, Navaeh, and Tucker

What is a favorite sibling activity or something you admire about them?
Riding dirt bikes or fishing

When I was young, I used to imagine myself as...
A welder



What is an accomplishment you are proud of?
I bought a truck

What extracurricular activities have you been involved in? (list # of years)
Which one(s) do you enjoy the most...why?
Cross country 7th and 8th grade, and one act because I like lifting heavy objects and helping people out.

What are your plans after high school? Education/career
Go to Hastings CCC and become a welder

Where do you see yourself in ten years?
Hopefully a house I'm comfortable in and making bank, but life doesn't always go your way.

What qualities do you possess that will get you there?
Determination

What is a favorite childhood memory?
Camping

What is a favorite high school Memory?
Friends



Kaylyn Kruse



What is your nickname?
Lynnie

What is a memory of a favorite birthday?
When I get a pie.

Who are your parents and siblings?
Julie Kruse Kris Kruse
Nathan, Jennifer, Emilie, Kendall

What is a favorite family activity or something you admire about them ?
When we go to Iowa and see family.

What is a favorite sibling activity or something you admire about them ?
Movies nights.

When I was young, I used to imagine myself as...
A human but Anime

What is a favorite childhood memory?
When I would go help my uncle at work.

What is a favorite junior high memory?
Leaving Junior high!

What class have you enjoyed the most as SEHS?
Why?
Art, because of Miss Denner.

Whom do you admire and why?
My sisters. I always be learning something new with them

What is your most valued possession? (Explain.)
My phone and family

If you had the opportunity to travel anywhere, where would you go? Why?
Italy and Iceland—they are both pretty places

If you could have one wish, what would it be?
Have everything I want and need

What are your pet peeves? Your bad habits?
Talking to too many people at once.

What are three things you must do in your lifetime?
Have fun, live life to the fullest, laugh

FFA NEWS

December Activities

District LDEs on December 13

On Wednesday, December 13, FFA members traveled to Aurora to compete in District LDEs. Results were as follows:

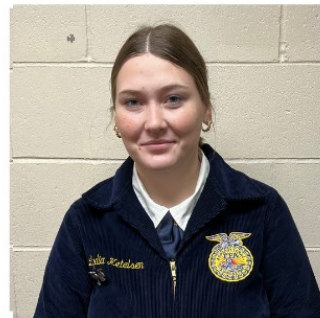
Ag Demonstration - 5th Place, Purple - Ryan Cumming, Josie Sock, Lydia Ketelsen

Conduct of Chapter Meetings - 6th Place, Blue - Korina Bittner, Arlette Irineo, Calvin Sindelar, Abner Carvajal, Katelyn Werts, Lexi Strain, and Noah Ketelsen

Sr. Public Speaking - Rebekah Ketelsen - Blue

Employment Skills - Lydia Ketelsen - Blue

Creed Speaking - Arlette Irineo - Blue



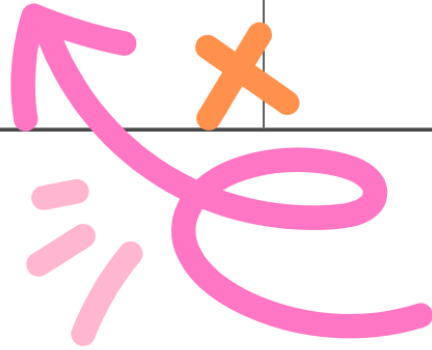
FFA Christmas Party

FFA members gathered together to celebrate Christmas with the annual FFA Christmas Party. Members enjoyed Subway sandwiches while they watched the Husker Volleyball match against Pitt.

They also participated in a White Elephant gift exchange! Members also spent time together playing games and hanging out before the end of the first semester.

JANUARY

2024



SUN	MON	TUE	WED	THU	FRI	SAT
31	1	2	3	4	5	6
			No School Teacher Work Day	School Resumes Regular Schedule	5:30pm: Var G/B BB vs Santee	6:00pm: Var G/B BB @ High Plains
7	8	9	10	11	12	13
	JH G/B BB vs. Central Valley (@ St. Edward)-1:00		FFA Chapter Meeting-3:45 JH G/B BB vs. Humphrey St. Francis (@Newman Grove)-2:30	G/B BB @ Heartland Lutheran-6:00		
14	15	16	17	18	19	20
	Underclassmen Honor Band - Kearney	JH G/B BB @ High Plains-1:00	JH BBB @ Palmer-3:00			HS Speech @ Boone Central
21	22	23	24	25	26	27
	JH G/B BB @ Nebraska Christian-1:30	HS G/B BB @ Humphrey St. Francis-6:00	FCCLA District 5 STAR Events at Madison Public School	HS GBB @ CWC (Bartlett)-6:00		WSC Honor Bands HS Speech @ Osceola JH G/B BBB @ Riverside Tournament 9:00AM
28	29	30	31	1	2	3
	UNK Honor Band & Choir -5:45AM	HS G/B BB vs. Riverside @6:00	Boone County Spelling Bee			



St. Edward Public Schools

P.O. Box C
St. Edward, NE 68660-0138

Phone: 402-678-2282
Fax: 402-678-2284

Web Page:

<http://www.stedpublicschool.org>

St. Edward Beavers Public School on Facebook

Upcoming Events:

Jan 4th- School Resumes

Feb 8th- 1:30 Dismissal

Feb 9th-No School

March 6th-1:30 Dismissal

**March 7th and 8th- NO
SCHOOL**



St. Edward Public Schools

P.O. Box C
St. Edward, NE 68660-0138

PRSRT-STD
U.S. Postage Paid
St. Edward, NE 68660-0138
Permit #17

POSTAL PATRON

